

Thank you for downloading!

This was created by
[You've Got This Math](#)

YOU MAY...

Print as many copies as you would like for your OWN personal use

Save this file on YOUR computer

Share on a blog, facebook page, ect as long as there is a direct link to You've Got This

PLEASE DO NOT...

Make copies to give to your fellow teachers or friends. Please share the link with them so they can download their own personal copy.

Save to any file that can be accessed by anyone besides you. This includes dropbox, 4shared, facebook groups, shared drives, ect

E-mail just the PDF

Claim this printable as your own

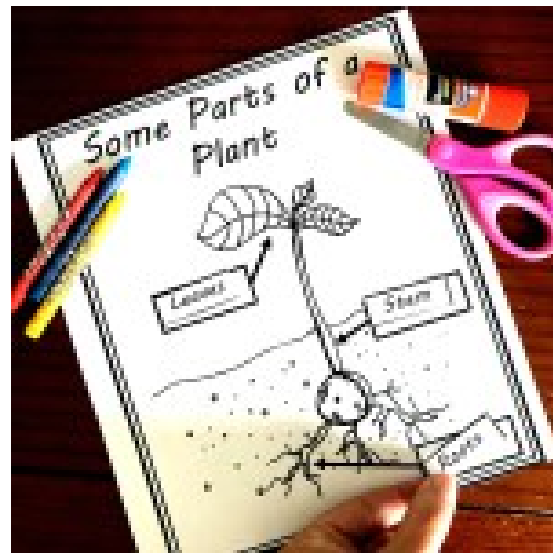
Post just the PDF on your blog, facebook page, ect

Sell or profit in any way from the PDF

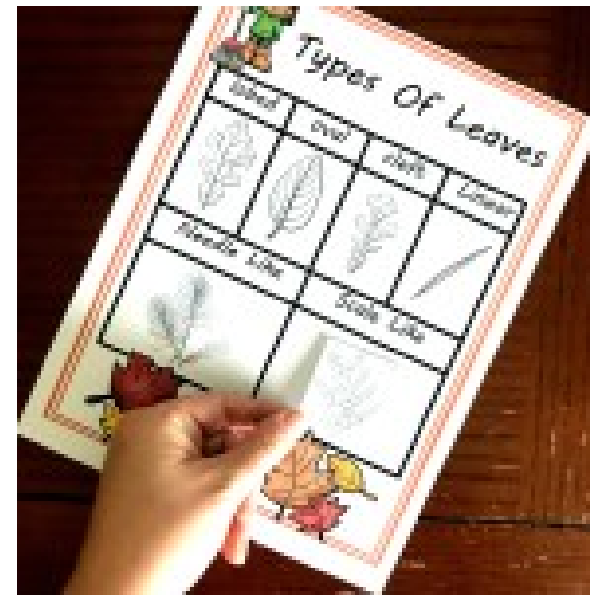


You May Also Like:

[Parts of a Plant](#)



[Types of Leaves](#)



[Vertebrate Sort](#)



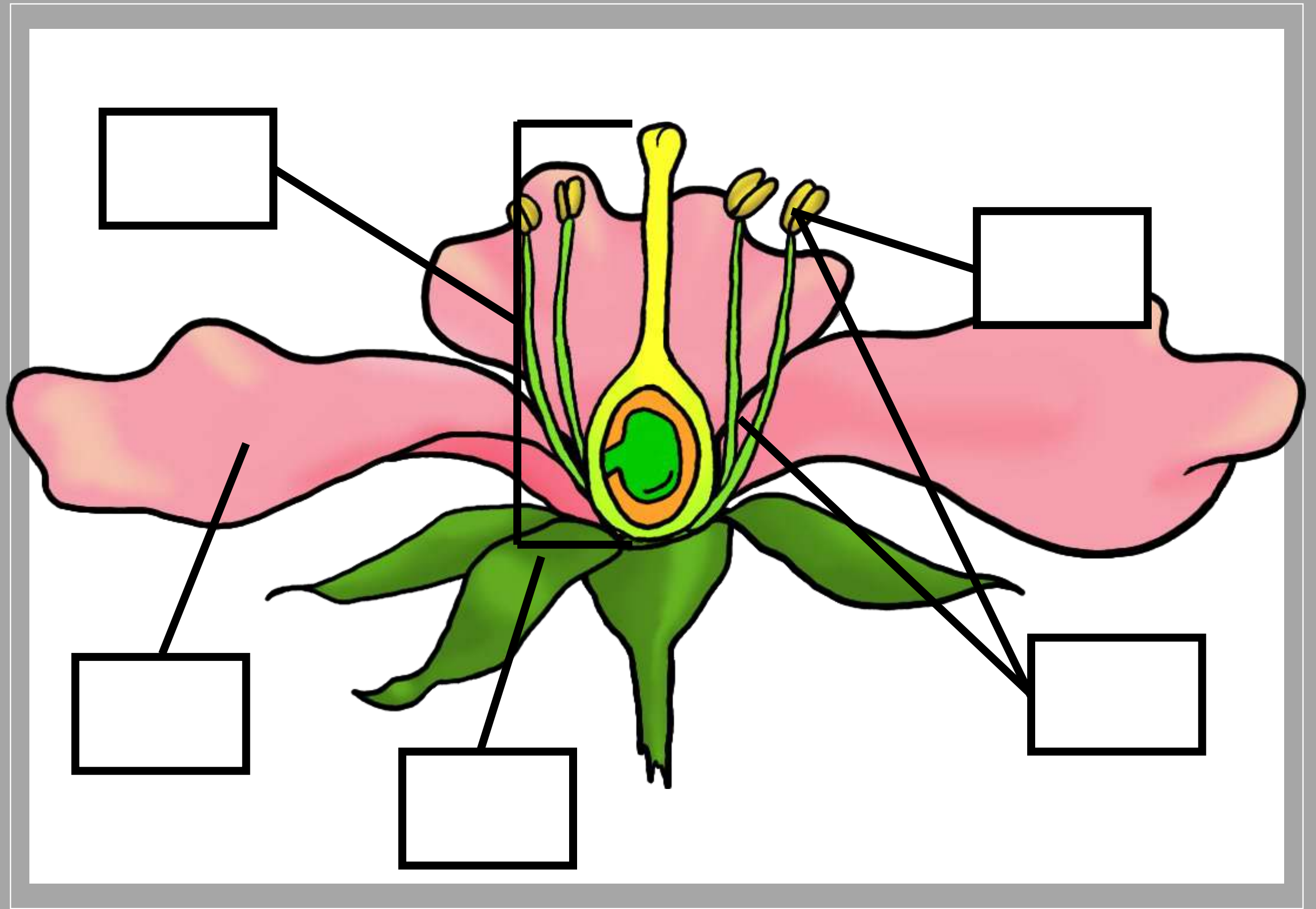
Parts of a Flower

Prep-Work:

1. Print off page 4 and 6 (one for each child)
2. Print off page 5 (one for each four children)
3. Gather up glue, scissors, and crayons.

Directions:

1. Have children cut out the names of the parts and glue them in the correct space.
2. For page 6, have children color in the parts of the flower based on the key. For the stamen have them color in one anther and filament red, and a different anther yellow.

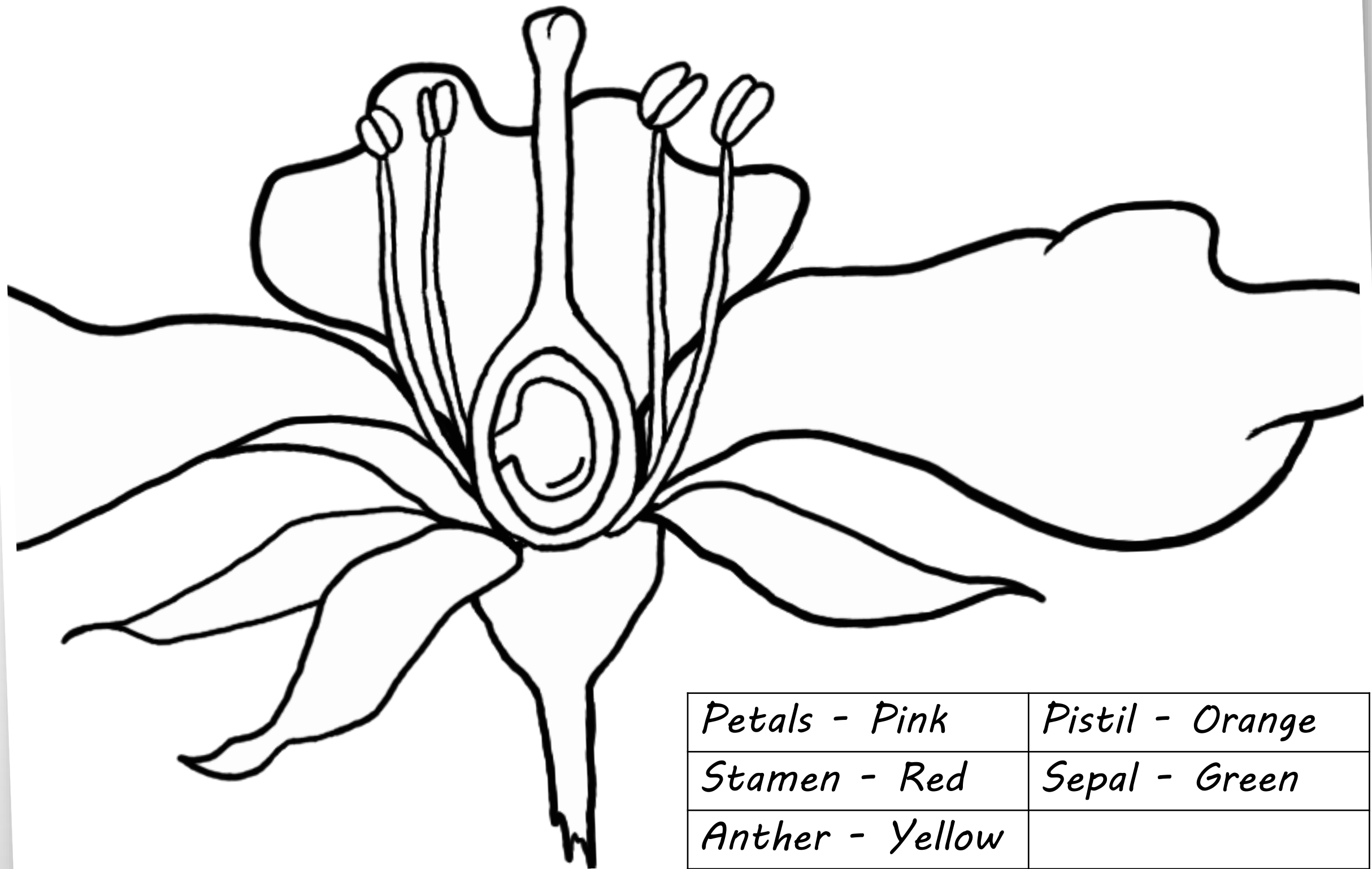


<i>Petals</i>	<i>Pistil</i>
<i>Stamen</i>	<i>Sepal</i>
<i>Anther</i>	

<i>Petals</i>	<i>Pistil</i>
<i>Stamen</i>	<i>Sepal</i>
<i>Anther</i>	

<i>Petals</i>	<i>Pistil</i>
<i>Stamen</i>	<i>Sepal</i>
<i>Anther</i>	

<i>Petals</i>	<i>Pistil</i>
<i>Stamen</i>	<i>Sepal</i>
<i>Anther</i>	



<i>Petals - Pink</i>	<i>Pistil - Orange</i>
<i>Stamen - Red</i>	<i>Sepal - Green</i>
<i>Anther - Yellow</i>	