

Subtract Mixed Fractions with Unlike Denominators

$$1. 6\frac{10}{12} - 1\frac{11}{12}$$

$$2. 7\frac{1}{8} - 1\frac{7}{8}$$

$$3. 6\frac{6}{8} - 1\frac{7}{8}$$

$$4. 6\frac{6}{15} - 1\frac{11}{15}$$

$$5. 9\frac{12}{50} - 1\frac{33}{50}$$

$$6. 3\frac{1}{4} - 2\frac{2}{4}$$

$$7. 5\frac{3}{7} - 2\frac{5}{7}$$

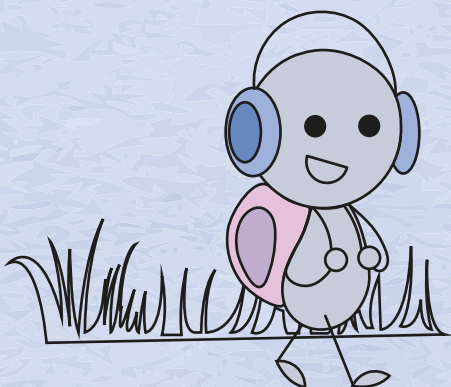
$$8. 5\frac{1}{3} - 1\frac{2}{3}$$

$$9. 7\frac{6}{20} - 1\frac{10}{20}$$

$$10. 5\frac{23}{25} - 1\frac{24}{25}$$

$$11. 5\frac{1}{5} - 2\frac{2}{5}$$

$$12. 4\frac{8}{10} - 2\frac{9}{10}$$



$$1. 16\frac{10}{12} - 10\frac{11}{12}$$

$$2. 7\frac{5}{12} - 2\frac{1}{2}$$

$$3. 8\frac{9}{10} - 3\frac{2}{3}$$

$$4. 19\frac{2}{3} - 11\frac{5}{8}$$

$$5. 13\frac{1}{8} - 12\frac{10}{12}$$

$$6. 18\frac{1}{2} - 17\frac{2}{8}$$

$$7. 14\frac{4}{10} - 13\frac{1}{3}$$

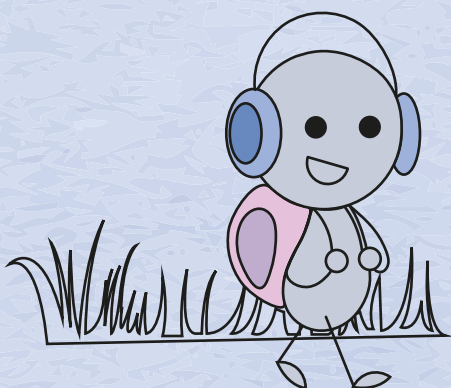
$$8. 19\frac{7}{12} - 19\frac{1}{5}$$

$$9. 20\frac{3}{4} - 18\frac{2}{3}$$

$$10. 19\frac{7}{10} - 13\frac{4}{10}$$

$$11. 17\frac{5}{6} - 1\frac{3}{5}$$

$$12. 9\frac{1}{5} - 5\frac{4}{6}$$



$1.5\frac{2}{3}-1\frac{1}{3}$

$2.3\frac{1}{11}-1\frac{1}{6}$

$3.4\frac{7}{9}-3\frac{4}{7}$

$4.3\frac{1}{3}-2\frac{4}{11}$

$5.9\frac{2}{3}-3\frac{1}{3}$

$6.3\frac{1}{5}-1\frac{1}{6}$

$7.7\frac{1}{3}-1\frac{2}{3}$

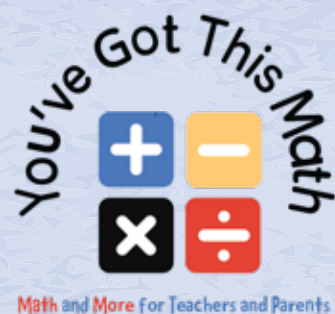
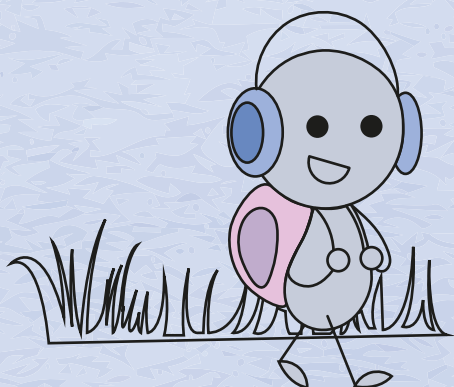
$8.3\frac{3}{4}-1\frac{5}{8}$

$9.5\frac{1}{6}-3\frac{11}{12}$

$10.5\frac{3}{4}-5\frac{1}{2}$

$11.4\frac{3}{5}-2\frac{5}{6}$

$12.1\frac{1}{3}-1\frac{1}{8}$



Math and More for Teachers and Parents