

Missing Number

Addition and Subtraction within 100



$$44 + \square = 79$$

$$57 - \square = 20$$

$$22 + \square = 46$$

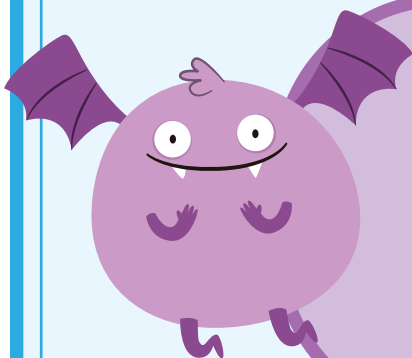
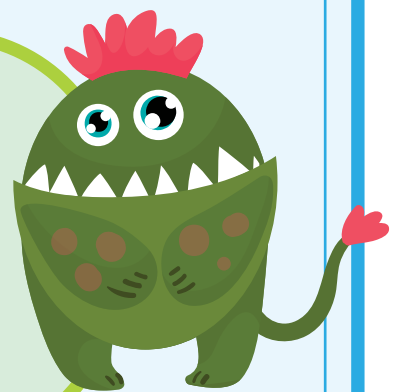
$$78 - \square = 32$$

$$65 + \square = 80$$

$$39 - \square = 10$$

$$11 + \square = 58$$

$$63 - \square = 14$$



$$30 + \square = 64$$

$$89 - \square = 47$$

$$50 + \square = 90$$

$$92 - \square = 54$$