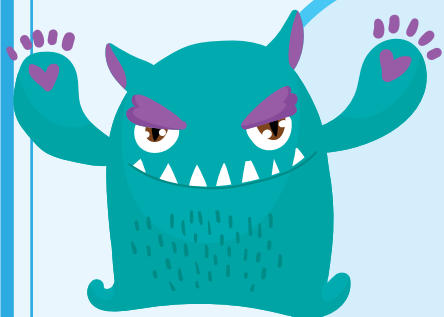


Mixed Addition and Subtraction Worksheets With Missing Operations



$$6 - \square = 4$$

$$17 - \square = 9$$

$$14 - \square = 3$$

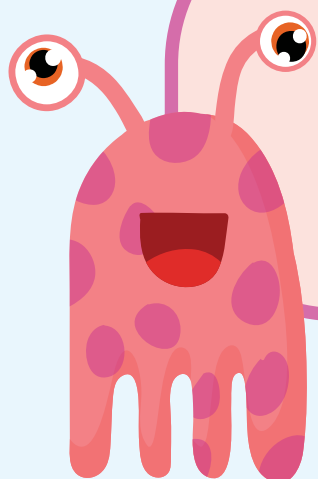
$$10 - \square = 4$$

$$23 - \square = 12$$

$$5 - \square = 3$$

$$16 + \square = 18$$

$$9 + \square = 16$$



$$8 + \square = 12$$

$$\square - 9 = 11$$

$$7 + \square = 13$$

$$13 + \square = 19$$