

Missing Number

Addition and Subtraction within 20



$$7 + \square = 20$$

$$17 - \square = 6$$

$$4 + \square = 20$$

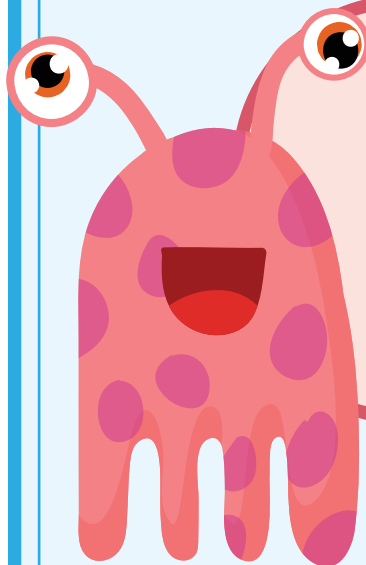
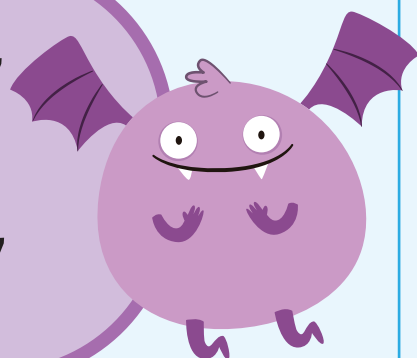
$$9 + \square = 20$$

$$20 - \square = 9$$

$$13 - \square = 7$$

$$20 - \square = 10$$

$$13 - \square = 7$$



$$15 + \square = 20$$

$$17 - \square = 20$$

$$\square + 2 = 3$$

$$\square + 12 = 16$$