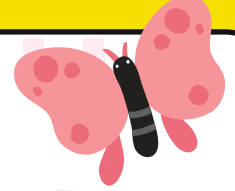


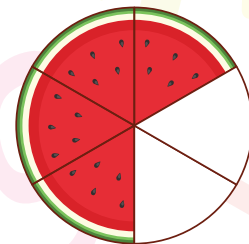
BUTTERFLY METHOD



- In the following picture, you can see a butterfly-like structure. In the orange ellipse, you can see 1 and 5 and in the purple one, the numbers are 6 and 3.
- Now, multiply the denominator first. You will get 30 as the product of 6 and 5.
- Then, multiply 1 and 5 and get 5 as the product written on the left side of the butterfly.
- After that, multiply 6 and 3 and get 18 as the product written on the right side of the butterfly. The denominators of 5 and 18 are 30 and 30.
- Now add $\frac{5}{30}$ and $\frac{18}{30}$. The sum will be $\frac{23}{30}$.



$$\frac{1}{6} + \frac{3}{5} = ?$$



$$\frac{5}{30} = \frac{1}{6} + \frac{3}{5} = \frac{18}{30}$$

$$\frac{5}{30} + \frac{18}{30} = \frac{23}{30}$$

Product = $6 \times 5 = 30$