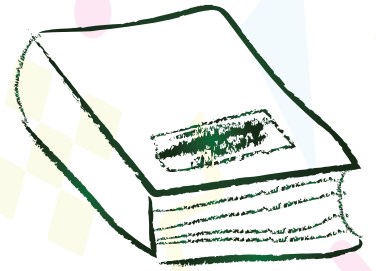


SUBTRACTING FRACTIONS WITH UNLIKE DENOMINATORS

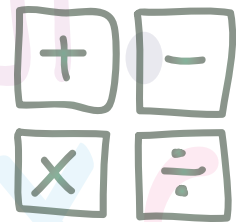
Problem:

$$\frac{1}{4} - \frac{1}{6} = ?$$



Solution:

- The LCM = 12
- Equivalent fractions



$$\frac{1}{4} = \frac{1 \times 3}{4 \times 3} = \frac{3}{12}$$

$$\frac{1}{6} = \frac{1 \times 2}{6 \times 2} = \frac{2}{12}$$

- Subtract the fractions

$$\frac{3}{12} - \frac{2}{12} = \frac{1}{12}$$

- Simplify the fraction if possible



$$\frac{1}{2}$$

