

# Dividing Whole Numbers by Fraction Using Area Model

Solve the following problem by using Area Model

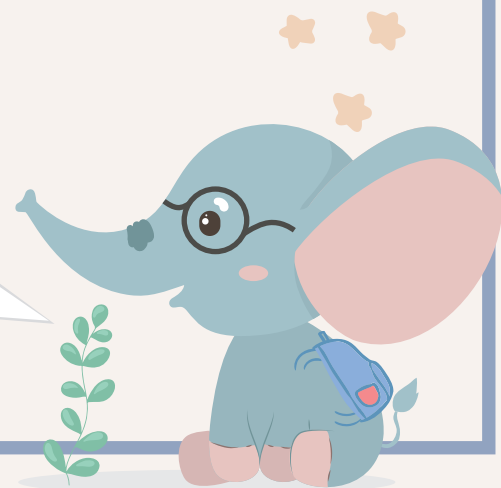
a)  $4 \div \frac{1}{3}$

b)  $5 \div \frac{1}{8}$

c)  $6 \div \frac{1}{5}$

d)  $7 \div \frac{1}{3}$

Use a pen or pencil to divide the tape diagram!



# Dividing Whole Numbers by Fraction Using Area Model

Solve the following problem by using Area Model

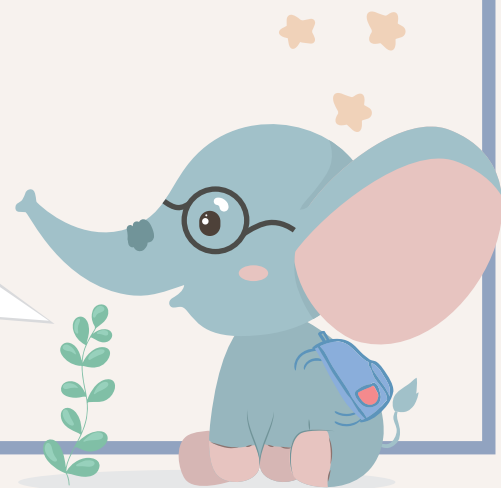
a)  $9 \div \frac{1}{9}$

b)  $6 \div \frac{1}{8}$

c)  $4 \div \frac{1}{8}$

d)  $5 \div \frac{1}{4}$

Use a pen or pencil to divide the tape diagram!



# Dividing Whole Numbers by Fraction Using Area Model

Solve the following problem by using Area Model

a)  $8 \div \frac{1}{5}$

b)  $7 \div \frac{1}{4}$

c)  $6 \div \frac{1}{3}$

d)  $5 \div \frac{1}{2}$

Use a pen or pencil to divide the tape diagram!

