

## Draw a Picture to Understand Dividing Whole Numbers by Fraction

a)  $5 \div \frac{1}{4}$

b)  $6 \div \frac{1}{3}$

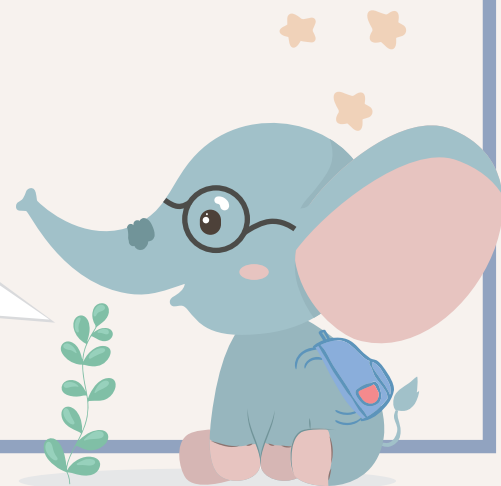
c)  $8 \div \frac{1}{4}$

d)  $7 \div \frac{1}{2}$

e)  $9 \div \frac{1}{3}$

f)  $4 \div \frac{1}{2}$

Use a pen or pencil to draw!



## Draw a Picture to Understand Dividing Whole Numbers by Fraction

a)  $12 \div \frac{1}{6}$

b)  $18 \div \frac{1}{3}$

c)  $4 \div \frac{1}{4}$

d)  $5 \div \frac{1}{5}$

e)  $3 \div \frac{1}{9}$

f)  $12 \div \frac{1}{8}$

Use a pen or pencil to draw!

