

Drawing Tallies

$$14 \div 7 = \square$$



$$5+2=7$$

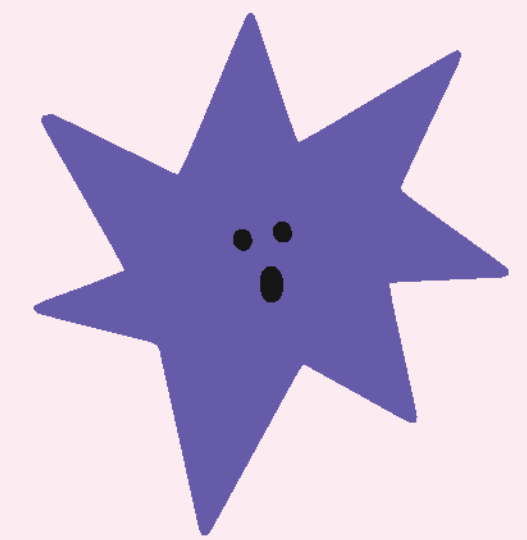


1

$$5+2=7$$

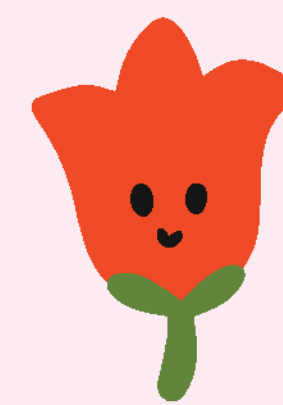


2



Draw number of tallies equal to the dividend. The number of tally in each group will be equal to the dividend.

Count how many group of tallies you made.



It's 4 times.

$$\text{So, } 14 \div 7 = \square 2$$