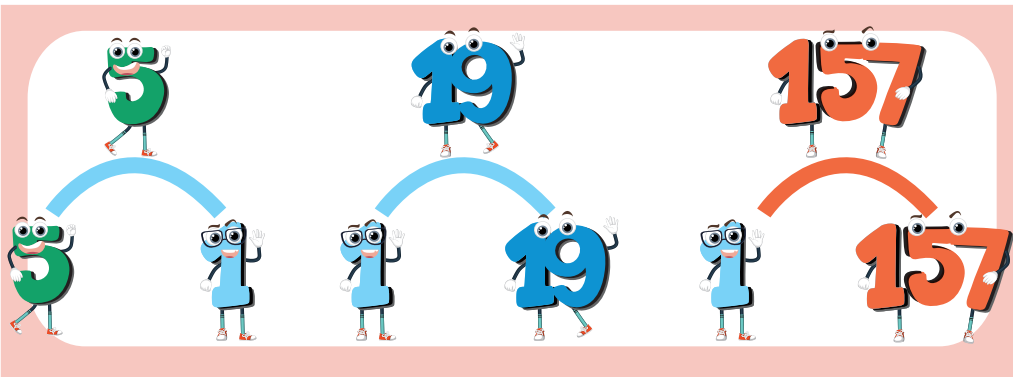


PRIME NUMBERS

EXACTLY TWO FACTORS:
1 AND THE NUMBER ITSELF

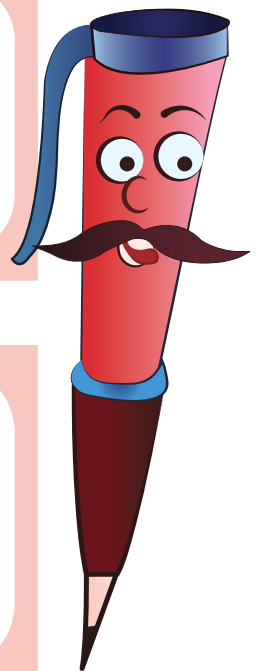
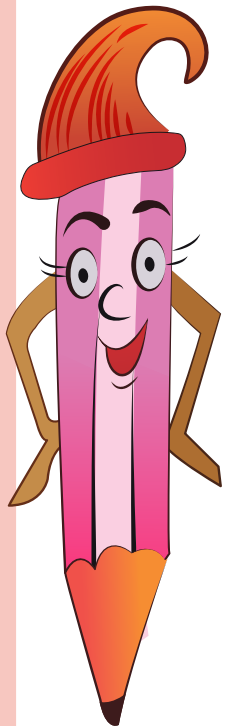


ONLY 1 ARRAY
 $7 \times 1 = 7$



EXAMPLES

101 109 89 79 13
17 19 29 43 53



COMPOSITE NUMBERS

MORE THAN 2 FACTORS



MORE THAN 1 ARRAY

$$5 \times 2 = 10$$



$$10 \times 1 = 10$$



EXAMPLES

40 50 8 15 26

121 250 50 125 200